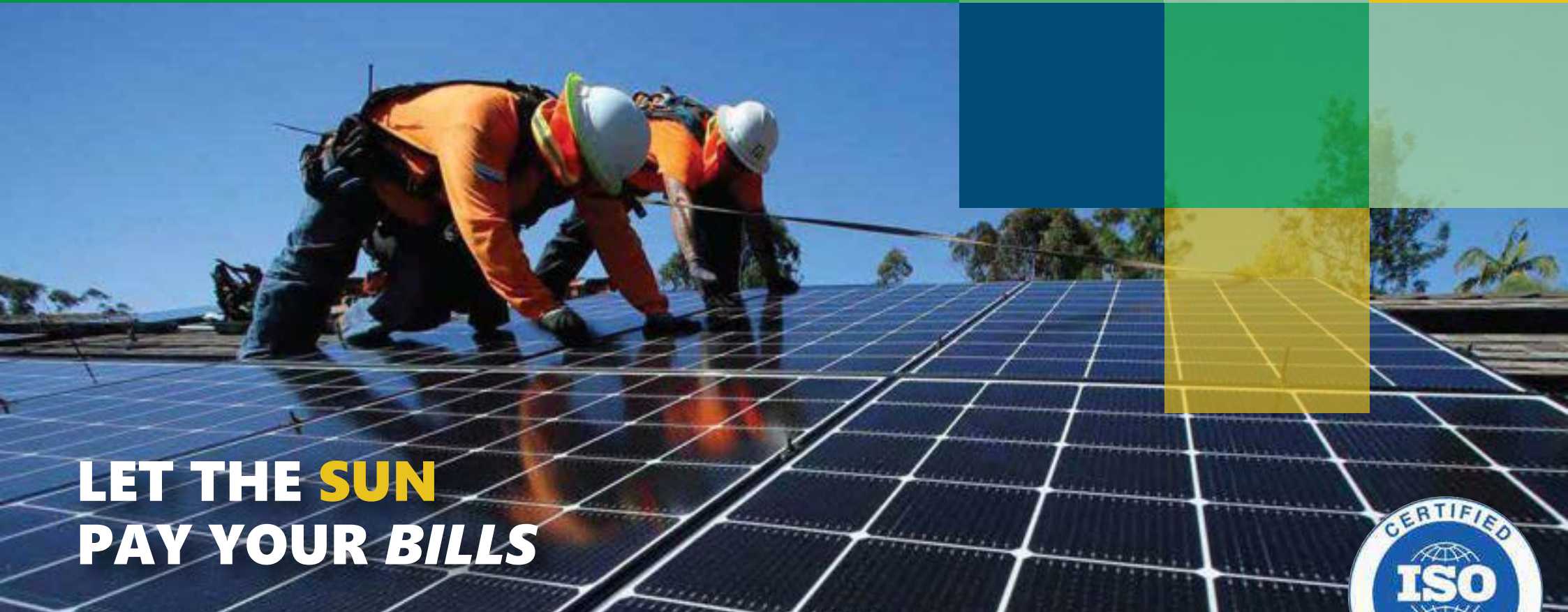




GMD SOLAR CO' PVT. LTD

An ISO 9001:2015 Certified Company



**LET THE SUN
PAY YOUR *BILLS***









BUILDING A WORLD OF OPPORTUNITIES IN **SOLAR ENERGY**



CONTENTS

 About GMDSC	04
<ul style="list-style-type: none">• One Glance Introduction• Brief Outline• GMD Milestones Achievement• Board of Directors	
 What We Do	07
<ul style="list-style-type: none">• Product and Service Range• Our Competitive Advantages	
 GMDSC Accreditations	11
<ul style="list-style-type: none">• Licences & Certifications• Pre-Qualifications• Our Clients & Served Departments	
 Our Reference Projects	14
 Our Presence	19
 Contacts	20



ABOUT GMDSC

ONE GLANCE INTRODUCTION

GMD Solar is an engineer-owned company specializing in turnkey construction of photovoltaic solar plants on a Domestic, Commercial and large-scale level. Our specialization covers the entire value chain, ranging from project development, construction, financing to operations and maintenance of solar systems. Our expertise focuses on the technical and economical optimization of the solar power plants. GMD Solar is developing a qualified line of international projects in the photovoltaic sector that are available to investors interested in the energy sector.

BRIEF OUTLINE

7 YEARS Experience since 2016	7.47 MWP Installed Capacity	9.6 MWP O&M Portfolio
48 EMPLOYEES	64 DISTRICTS	55 Served Departments

Founded	2016
Licensed by Government Authorities/Regulatory for Solar Energy Works	12
Pre-Qualified by Govt./NGOs for Solar Energy Works	12
Total Solar PV Capacity Installed (Private Sector)	1.58 MW
Total Solar PV Capacity Installed(Govt./Semi/Auto/NGOs)	5.89 MW
Financial Stability / Financial Accumulative Transactions	500+ Million
Served Govt. Departments/NGOs	55
Nos. of Clients	400+

GMD MILESTONES ACHIEVEMENT

1998



- Founded as Asmat Electric Store in a Small Town.

2016



- Evolution Stage Developed

2017



- Created as Limited Company under SECP
- Ordinance 1984. Licensed C6 by PEC under the By-Laws 1987.
- 380KW Solar Energy Provided to Public Customer.

2018



- Certified by ISO 9001-2015.
- 750KW Solar Energy Provided to Govt./NGOs
- Sector. 1200KW Solar Energy Provide to Public Customer.

2019



- Licensed C6 to C4 Upgraded by PEC.
- 1010 KW Solar Energy Provided to Govt./NGOs Sector.

2020



- 100 Successful Projects Milestone Achieved.
- 1250 KW Solar Energy Provided to Govt./NGOs Sector.

2021



- 1380 KW Solar Energy Provided to Govt./NGOs Sector.

2022



- New Venture Created Naming IDI(Import, Distribute & Install) for Services of Local Distributors & Public Customers.
- 1500 KW Solar Energy Provided to Govt./NGOs Sector.

ADVISORY BOARD OF DIRECTORS

ENGR. KAMRAN ALI

BE-Manufacturing Engineering from GKI Institute Pakistan
MS & PhD-Mechatronics Jeju National University South Korea

SARISH REHMAN

PhD & Post-Doctorate-Advance Materials & Mechanics
From Peking University Beijing China
Specialization: Enhancing the performance of Electrochemical Devices
(Battery Cell, Solar PV Cell)

ENGR. FAISAL KALIM

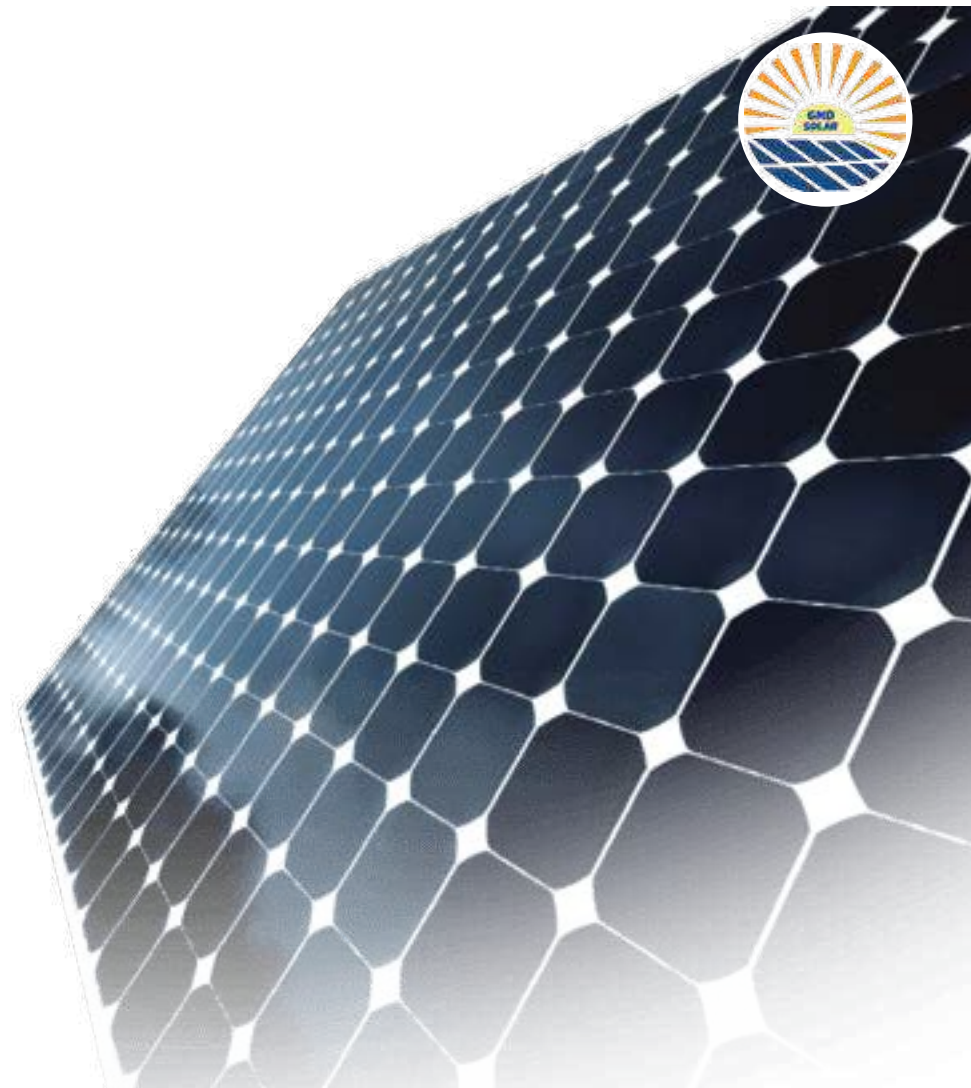
BE-Electronic Engineering from GKI Institute Pakistan
MS Biomedical Computing, Technical from University of Munich

ENGR. ASMAT KHAN

BE-Mechanical Engineering from GKI Institute Pakistan
MBA-MARKETING & FINANCE FROM UNIVERSITY OF PESHAWAR

ENGR. HARIS KHAN

BE-Manufacturing Engineering from GIK Institute Pakistan
MS Energy Materials, University of Kiel, Germany



“ We apply our industry knowledge and engineering capacity to bring the potential of Solar to the World ”

”

WHAT WE DO

We have the experience and capacity to support solar projects from inception, throughout the development and construction stages and successful optimum power production to the end consumer.

PRODUCT & SERVICE RANGE



PRODUCT RANGE

- Solar PV Modules-A Grade Tier-1 Latest Technologies
- Hybrid-Off/On Grid Inverters-High Efficient with Latest Technology
- Batteries (Lead Acid, Dry, Deep Cycle, Tubular, Lithium Ion, Super Capacitor, Cells)
- VFD Inverters
- Water Pumps & Motors
- Solar Water Heater & Geysers

PV SOLAR MOUNTING STRUCTURES

GMD Solar has its own plant of manufacturing customized structure at Roof, Ground, Parks as per customer requirements and international standards.

O&M

Operations and Maintenance

DESIGN & INSTALLATION SERVICES

EPC

Engineering, Procurement & Construction

- PV Solar Hybrid
- PV Solar On-Grid
- PV Solar Based Water Pump
- PV Solar Roofs
- PV Solar Parks
- Solar Street Lights

CONSULTANTS

- Energy Audits
- Solar Plant Designing & Implementation
 - Net Metering
- Projects Executions



OUR PRODUCTS & SERVICES ARE COMPLIANCE AND ACCORDANCE WITH THE FOLLOWING INTERNATIONAL STANDARDS





“THINK OUTSIDE THE ROOF”

PARTNERS WE SEEK & SERVICES WE OFFER:

You are Investor; We provide investment opportunities from early stage project development to fully connected PV Power plants. Further- more, O&M and Asset Management Services to secure long term profits of your investment.

You are Project Developer; We can partner up with you from early stage developments and provide technical assistance along the way or purchase your fully developed projects.

You are Off-taker; You are an industrial or energy trading company and want to purchase clean and un-expensive electricity? We can provide PV electricity, so that you, your clients and the society benefit from your decision.

You are all in one Investor & Developer & Off-taker;
We can simply design and build the most reliable and care free PV system for you. A full package including Operation and Maintenance service. So that you can concentrate your efforts on your core activities.



OUR COMPETITIVE ADVANTAGES

EXPERTS IN PROJECT EXECUTION

Successful implementation of utility-scale solar power projects demands highly effective project management and planning from commencement up to hand-over to the client. GMDSC is successful because the entire organization is highly focused on project execution.

ENGINEERING EXPERTISE

As Young Engineers, Our experienced in-house engineering resources enable GMDSC to respond flexibly and responsively to project specific requirements. We are highly experienced not only in solar power plant design, but also in engineering solutions for grid interconnections including state-of-the-art electrical substations.

NATIONAL REACH

Together with its affiliated group companies, GMDSC has experience or presence in whole country. We are equally at home working in developed markets such as Lahore, as we are in emerging economies in KPK & Baluchistan. Our reach extends throughout Pakistan, Gilgit & Azad Kashmir.

FINANCIAL CAPACITY

Through the financial strength and stability of its parent companies, GMDSC has the support and financial backing necessary to undertake the largest utility scale solar projects.

One Stop Solution
for all **Solar Requirements**



GMDSC ACCREDITATIONS

LICENSEE OF FOLLOWING GOVT. REGULATORY



SECP as Pvt Ltd Company under 1984 CO's Ordinance



ISO 9001-2015 Certified by ISO International



Pakistan Engineering Council (PEC)



Energy & Power Department KPK



Income & Sales Tax Department, FBR



Accountant General of Pakistan



Intellectual Property Organization of Pakistan (IPO)



KP Revenue Authority (KPRA)



Punjab Revenue Authority (PRA)



Sindh Revenue Board (SRB)



Baluchistan Revenue Authority (BRA)



Professional Tax Certificate (Islamabad)

PRE-QUALIFIED BY GOVT./NGOS FOR SOLAR ENERGY WORKS



C&W Department KPK



Irrigation Department KPK



Local Council Board KPK (TMAs)



Public Health Engineering KPK



Local Govt. & RD Department KPK



National Rural Support Programme

NRSP, Islamabad



SRSP, Peshawar



Human Appeal-UK for Pakistan



UNDP, Pakistan



Fisheries Department Punjab



Agriculture Department Punjab



PARC Islamabad



AUTHORIZED PARTNERSHIP/DEALERSHIPS



GMD MANUFACTURING UNITS

GMD MOUNTING FRAMES-L2/L3

GMD MANUAL TRACKER

GMD AUTO SUN TRACKER

GMD CUSTOMIZED STRUCTURE FOR PV PANELS

GMD INVERTERS(HYBRID/OFF-GRID/ON-GRID)

GMD AUTO WASHING SYSTEM FOR PV PANELS



OUR CLIENTS & SERVED DEPARTMENTS

Our clients are Government Departments, NGOs, Public Sector, & Domestic Consumers that require and obtain from GMD SOLAR, the best solar plants on industrial roofs and ground mounted. We take care of our long-term partnerships over the lifetime of every solar power system.





OUR REFERENCE PROJECTS

Our Reference Projects are testament to our success in delivering world-class solar power plants to leading investors in the PV sector. GMDSC has a portfolio of 7000KW Of successful projects in entire country.



ISLAMABAD CAPITAL TERRITORY

- 📍 **LOCATION** ISLAMABAD
- ⚡ **CAPACITY** 85 KW
- CLIENT:** ICT AGRICULTURE DEPARTMENT



KHYBER PAKHTUNKHWA

- 📍 **LOCATION** TANK South Waziristan
- ⚡ **CAPACITY** 100 KW
- CLIENT:** DISTRICT & SESSION COURT

OUR REFERENCE PROJECTS

KHYBER PAKHTUNKHWA

- 📍 **LOCATION** ABBOTTABAD
- ⚡ **CAPACITY** 84 KW
- CLIENT:** DISTRICT & SESSION COURT



KHYBER PAKHTUNKHWA

- 📍 **LOCATION** DISTRICT KHYBER
- ⚡ **CAPACITY** 70 KW
- CLIENT:** DISTRICT & SESSION COURT



PUNJAB

- 📍 **LOCATION** MULTAN
- ⚡ **CAPACITY** 80KW
- CLIENT:** NUML UNIVERSITY



PUNJAB

- 📍 **LOCATION** MULTAN
- ⚡ **CAPACITY** 40 KW
- CLIENT:** AGRICULTURE DEPARTMENT



OUR REFERENCE PROJECTS

SINDH

- 📍 **LOCATION** THARPARKER
- ⚡ **CAPACITY** 100 KW
- CLIENT:** Human Appeal-UK



KHYBER PAKHTUNKHWA

- 📍 **LOCATION** KARAK
- ⚡ **CAPACITY** 100 KW
- CLIENT:** TEHSIL MUNICIPAL ADMINISTRATION KARAK



BALOCHISTAN

- 📍 **LOCATION** LORALAI
- ⚡ **CAPACITY** 60 KW
- CLIENT:** UNIVERISTY OF LORALAI



KHYBER PAKHTUNKHWA

- 📍 **LOCATION** MANSEHRA
- ⚡ **CAPACITY** 50 KW
- CLIENT:** PARC ISLAMABAD



OUR REFERENCE PROJECTS

KHYBER PAKHTUNKHWA

- 📍 LOCATION KOHAT
- ⚡ CAPACITY 70 KW
- CLIENT: C&W KOHAT



KHYBER PAKHTUNKHWA

- 📍 LOCATION SWABI
- ⚡ CAPACITY 170 KW
- CLIENT: C&W SWABI



PUNJAB

- 📍 LOCATION MIANWALI
- ⚡ CAPACITY 115 KW
- CLIENT: NRSP ISLAMABAD



ISLAMABAD CAPITAL TERRITORY

- 📍 LOCATION ISLAMABAD
- ⚡ CAPACITY 150 KW
- CLIENT: AGRICULTURE DEPARTMENT



OUR REFERENCE PROJECTS

KHYBER PAKHTUNKHWA

- 📍 **LOCATION** PESHAWAR
- ⚡ **CAPACITY** 50 KW
- CLIENT** DISTRICT & SESSION COURT



KHYBER PAKHTUNKHWA

- 📍 **LOCATION** SWABI
- ⚡ **CAPACITY** 120 KW
- CLIENT** DISTRICT & SESSION COURT



KHYBER PAKHTUNKHWA

- 📍 **LOCATION** KOHAT
- ⚡ **CAPACITY** 70 KW
- CLIENT** C&W KOHAT



PUNJAB

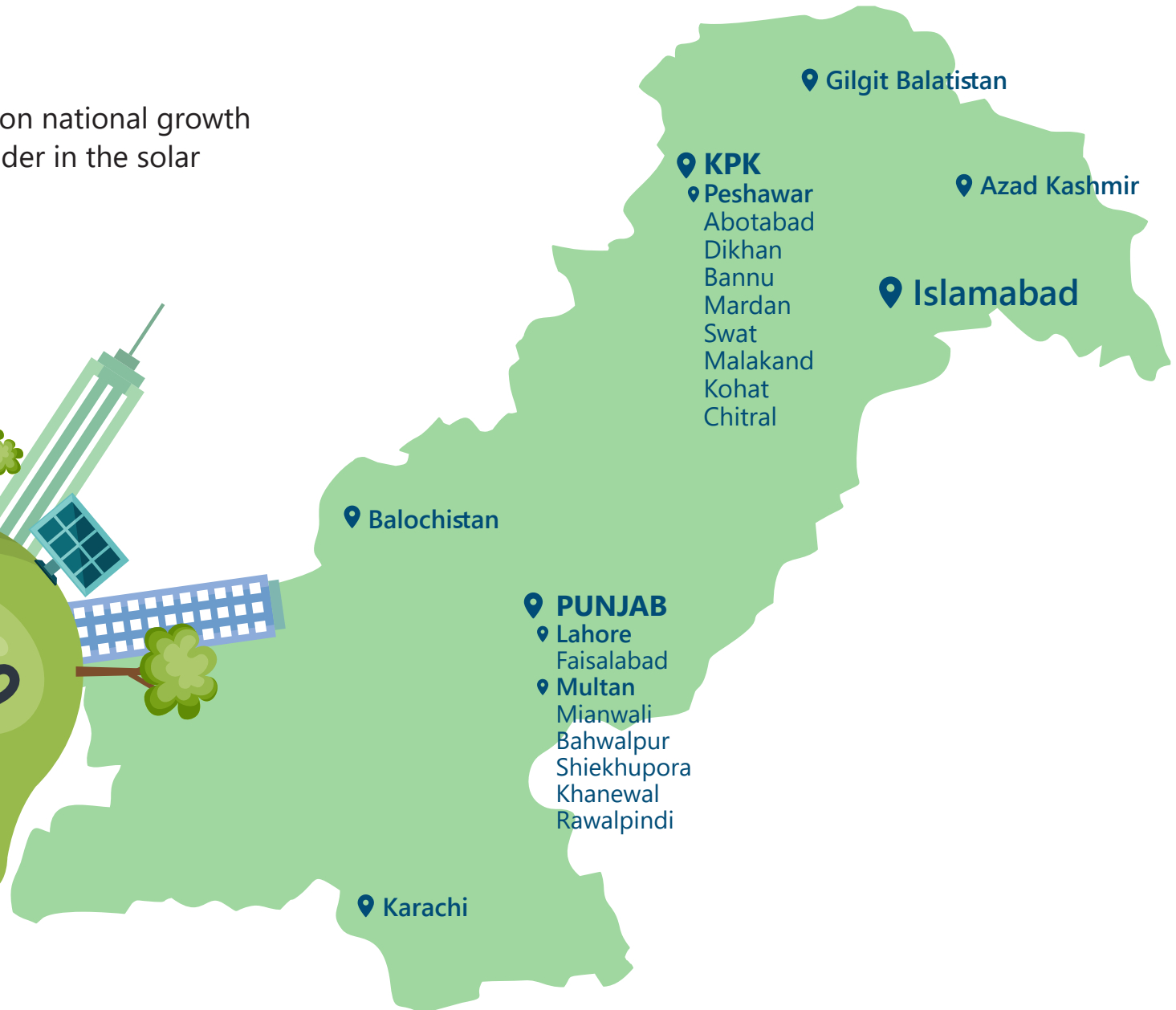
- 📍 **LOCATION** MULTAN
- ⚡ **CAPACITY** 30 KW
- CLIENT** COTTON RESEARCH INSTITUTE





OUR PRESENCE

GMDSC is strategically focused on national growth and positions itself as a new leader in the solar power sector in the country.





GMD SOLAR CO' PVT. LTD

An ISO 9001:2015 Certified Company

Contacts
www.gmd.com.pk
info@gmd.com.pk
0300-1504447, 091-3049495

Corporate Office (KPK)
Office#404, 4th Floor Sheikh
Yaseen Tower, Arbad Road
Peshawar

Corporate Office (Islamabad)
Plot#56 Yamaha Chowk Main
Service Road Industrial Area
Humak Islamabad